

KOMATSU

PW
220



PW220-7

PW220-7

HYDRAULIC WHEELED EXCAVATOR

NET HORSEPOWER

118 kW 158 HP / 160PS

OPERATING WEIGHT

19.450 - 23.260 kg

BUCKET CAPACITY

0,48 m³ - 1,68 m³

WALK-AROUND

The PW220-7 is a rugged, productive, all-European machine. Designed and expressly built for European markets, it delivers productivity, reliability and operator comforts in a robust, environmentally-friendly package. Komatsu's exclusive, on-board, HydraulMind system assists in all operations, providing enhanced machine performance that's always perfectly matched to the task.

What's new on Dash 7:

- High lifting capacity
- Low fuel consumption
- Easier maintenance and serviceability
- Improved operator comfort
- Low dynamic operator noise
- Meets EC stage II emission regulations
- Advanced Attachment Control
- Multi-function colour monitor
- PW220-7 has a standard width of 2,75 m
- Heavy duty counterweight

Advanced Attachment Control

The PW220-7 can be optionally equipped to handle a wide variety of attachments. The advanced attachment control system features:

- Operator selectable hydraulic flow control
- Adjustable pre-sets for rapid attachment changeover
- Attachment piping options for breaker, clamshell, crusher.

Undercarriage

- Designed for high ground clearance
- High oscillation angle
- Virtually zero axle rocking with outboard wet disc system
- Powerful drawbar pull
- Automatic 3-speed travel
- Class leading 35 km/h maximum travel speed

Easy maintenance

- One of the features now on the new wheeled excavator is a walkway across the excavator superstructure, giving easy access to the engine compartment.

Productivity Features

- High lifting capacity and good stability.
- Heavy duty digging performance; Large bore cylinders are installed to greatly increase digging forces and productivity in tough conditions.



NET HORSEPOWER
118 kW 158 HP / 160 PS

OPERATING WEIGHT
PW220-7: 19.450 - 23.260 kg

BUCKET CAPACITY
0,48 m³ - 1,68 m³

In harmony with the environment

- Low emission engine
The powerful turbocharged and air-to-air aftercooled Komatsu SAA6D102E-2 provides 118 kW / 158 HP. This engine meets Stage II emissions standards with increased power and machine productivity.
- Economy mode reduces fuel consumption
- Low operating noise
- Designed for easy end of life recycling

SpaceCab™

The new PW220-7's cabin space has been increased by 14%, offering an exceptionally-roomy operating environment.

- Highly-pressurised cabin with optional air conditioner
- Low-noise design
- Low-vibration design with cabin damper mounting
- Cab moved forward for better visibility
- Ergonomic control levers
- Seat specially designed for wheeled machines, with exceptional extra comfort.

Excellent reliability and durability

- Reliable major components designed and built by Komatsu
- Exceptionally-reliable electronic devices



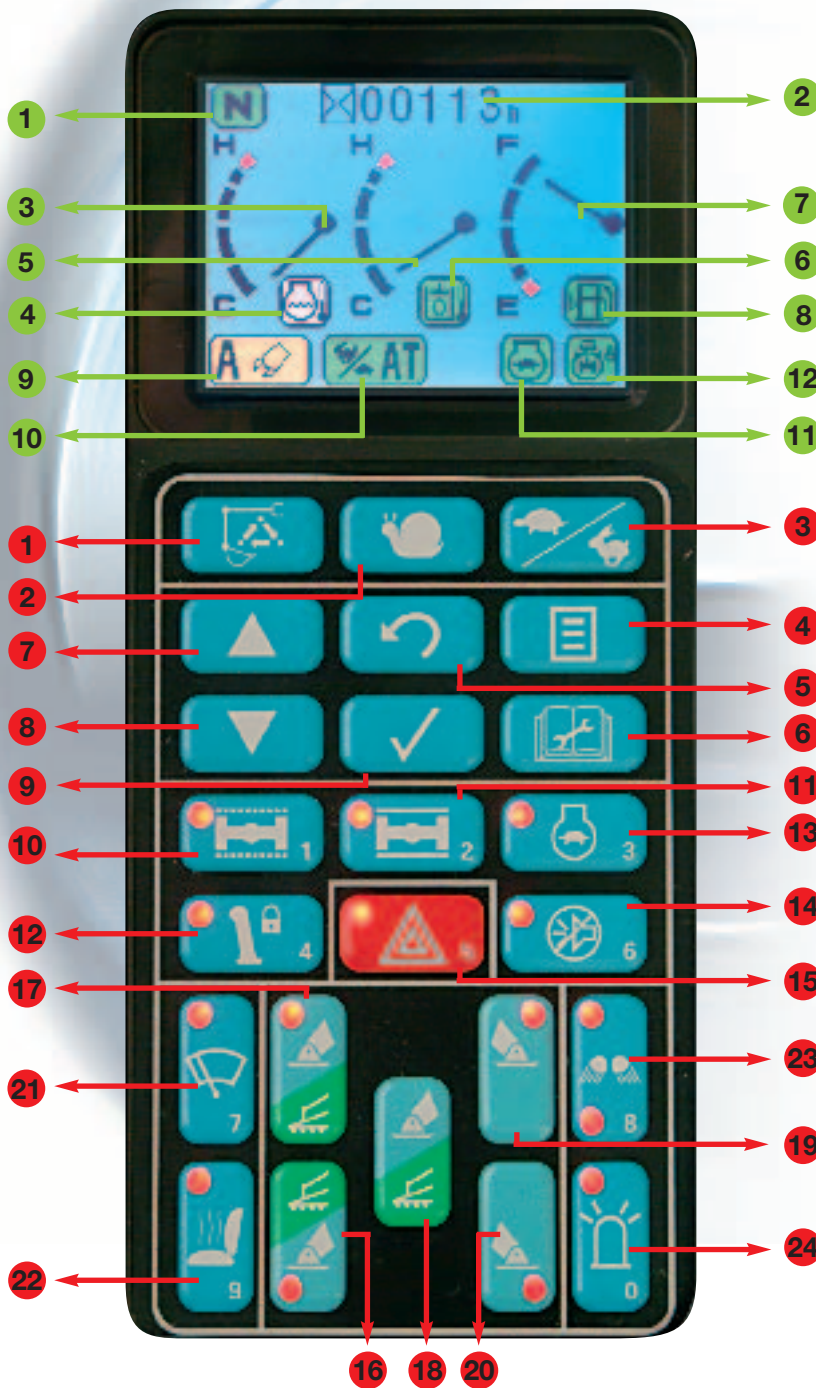
EMMS

EMMS. (Equipment Management and Monitoring System)

The EMMS is a highly sophisticated system, controlling and monitoring all the excavator functions. The user interface is highly intuitive and provides the operator with easy access to a huge range of functions and operating information.

Four working modes

The PW220-7 is equipped with three working modes (A, E, B), plus a lifting mode (L). Each mode is designed to match the engine speed, pump speed, and system pressure to the current requirement. This provides the flexibility to match equipment performance to the job at hand.



On-screen symbols

- 1 Travel direction
- 2 Service meter and clock
- 3 Engine water gauge
- 4 Engine water temperature warning
- 5 Hydraulic oil gauge
- 6 Hydraulic oil temperature warning
- 7 Fuel gauge
- 8 Fuel low level warning
- 9 Working mode
- 10 Travel mode
- 11 Auto deceleration
- 12 Swing lock

Push-button controls switch

- 1 'Working mode select
- 2 'Creep speed
- 3 'High/low speed select
- 4 'Menu select key
- 5 Undo switch
- 6 Service menu
- 7 Scroll up
- 8 Scroll down
- 9 Accept key
- 10 Suspension auto lock
- 11 Suspension lock
- 12 Control lever lock
- 13 Engine auto deceleration
- 14 Buzzer cancel
- 15 Hazard warning
- 16 Rear left outrigger/blade
- 17 Front left outrigger/blade
- 18 Select all chassis attachment
- 19 Front right outrigger
- 20 Rear right outrigger
- 21 Lower wiper
- 22 Heated seat
- 23 Front and rear work lights
- 24 Beacon warning light

Active Mode

For maximum power and fast cycle times. Normally used for heavy operations such as hard digging and loading. This mode allows access to the 'Power Max' function to temporarily increase digging force by 7% for added power in tough situations.

Economy mode

The environmentally-friendly mode. Run more quietly during operations at night and/or in urban areas. Fuel consumption is reduced by 20% and exhaust emissions are also reduced.

Breaker mode

Delivers optimal hydraulic pressure, flow and engine RPMs for powerful breaker operations.

Lifting mode

Increases the lifting capacity 7% by raising the hydraulic pressure. This mode supports safe lifting operations.

Working Mode	Application	Advantage
A	Active mode	<ul style="list-style-type: none"> • Maximum production/power • Fast cycle times
E	Economy mode	<ul style="list-style-type: none"> • Excellent fuel economy
B	Breaker mode	<ul style="list-style-type: none"> • Optimal engine rpm and hydraulic flow
L	Lifting mode	<ul style="list-style-type: none"> • Hydraulic pressure is increased by 7%



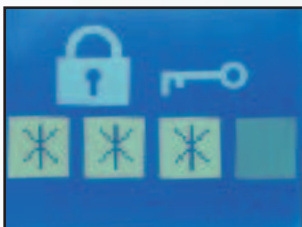
Hydraulic flow general adjustment screen in B (breaker) mode.



Fine tune hydraulic flow adjustment screen in B (breaker) mode.



Fine tune hydraulic flow adjustment screen in A (Active) or E (economy) mode.



Password screen.

Easy to see and easy to use

Superb recognition colour LCD screens for each mode. Letters and numbers are combined with colour images for exceptionally clear and easy to read information. The high-resolution screen is easy to read in bright sun and in all lighting conditions.

Automatic three-speed travel

The travel speed can be automatically shifted from high to low speed, according to the ground conditions

	High	Low	Auto	Creep
Travel Speed	35 km/h	9,5 km/h	0-35 km/h	2,0 km/h

Fingertip hydraulic pump oil flow adjustment

From the LCD monitor, automatically select optimal hydraulic pump oil flow for breaking, crushing, and other operations in the B, A or E modes. Also, when simultaneously operating with attachments and work equipment, the flow to the attachment is reduced automatically, thus delivering smooth movement of the work equipment.

Password protection

Prevent unauthorized machine transport. The engine cannot be started without your four-digit password. For total security, the battery is connected directly to the starter motor, and it and the engine both need the password. The password can be activated on request.

WORKING ENVIRONMENT

PW220-7's cab interior is spacious and provides a comfortable working environment...

SpaceCab™

Comfortable cab

The new PW220-7 inner cab volume is 14% greater than the dash 6, offering an exceptionally-comfortable operating environment. The large cab enables the seat back, with headrest, to be reclined horizontal.

Pressurised cab

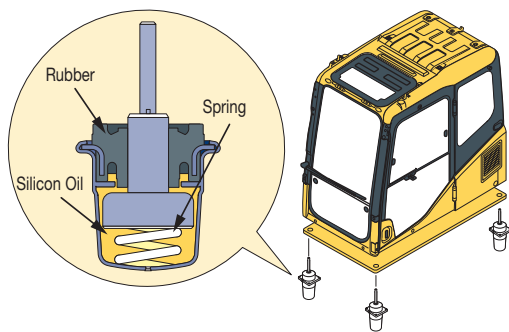
The standard-equipped air conditioner, air filter and a higher internal air pressure resist dust entry into the cab.

Low-noise design

Noise levels are substantially reduced; engine noise as well as swing and hydraulics operations noise.

Cab damper mounting for low vibration levels

PW220-7 uses a new and improved viscous damping cab mount system that incorporates a longer stroke plus an added spring. The new cab damper mounting, combined with strengthened left and right-side decks, aids the reduction of vibrations to the operator's seat.



Easy cleaning of air conditioner filter
Easy removal/installation of air conditioner filter element, without tools facilitates easier cleaning.



Large sun roof with integrated sun shade



12-volt power supply and (optional) radio cassette



Climate control



Tiltable steering wheel with several functions; wiper control, indicator, horn, and head lights

Multi-position controls

The multi-position, proportional pressure control levers allow the operator to work in comfort whilst maintaining precise control. A double-slide mechanism allows the seat and controllers to move together, or independently, allowing the operator to position the controllers for maximum productivity and comfort.



Defroster/Demister



Hot and cool box



Ergonomic
3 button lever



Seat sliding range:
340 mm - increased by
120 mm over dash 6

Safety Features

Improved, wide visibility

The right side window pillar has been removed and the rear pillar is narrower to provide greater visibility. Blind spots have been decreased by 34% compared to the dash 6 cabin.

Pump/engine room partition

Prevents hydraulic oil from spraying onto the engine to reduce the risk of fire.

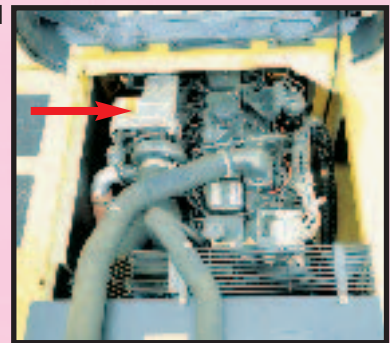
Thermal and fan guards

Placed around high-temperature parts of the engine. The fan belt and pulleys are well protected.

Steps with non-slip surface and large handrail

Steps with non-slip surfacing ensure safer maintenance.

Thermal guard



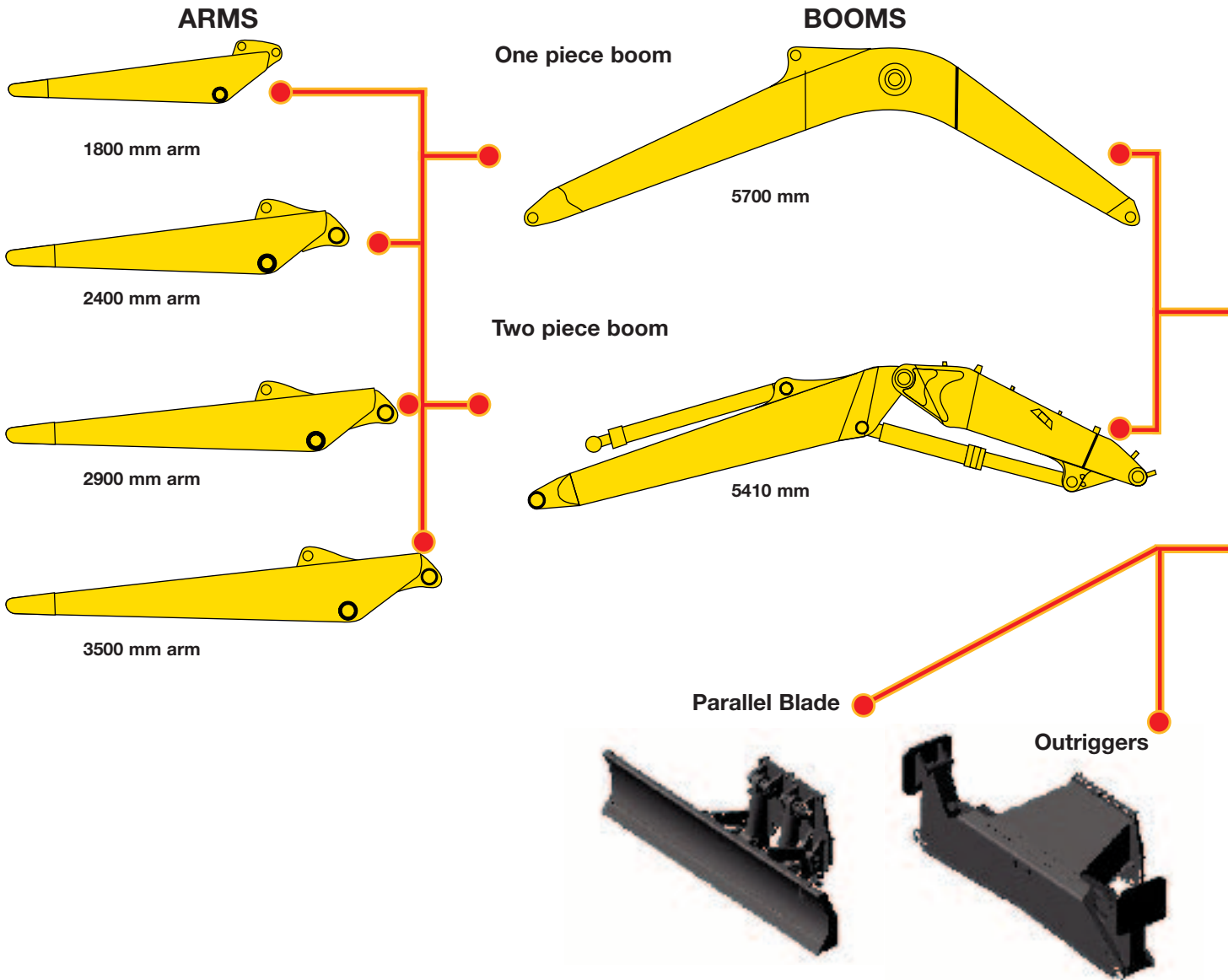
Non slip sheet



Large handrail for
safe access



FLEXIBILITY



Additional hydraulic circuits

A2-way additional hydraulic circuit, electrically controlled from the wrist control levers, is fitted as standard.

Outriggers

Independently controlled outriggers are optionally available on both, the front and rear of the machine. The cylinder protections are standard on the outriggers.



The PW220-7 can be specified with an enormous range of work-equipment and undercarriage attachments to meet the needs of almost any application.



Parallel blade



Outriggers



Attachments commonality & functionality

The stabilizer and dozer blade are interchangeable, and therefore can be attached on the front or rear of the chassis. The stabilizer and dozer blade are controllable from the monitor panel. The monitor panel has five buttons that allow individual attachment operation as well as collective operation.

Toolbox

Tough, secure toolboxes, integrated in the mudguards are fitted on both sides of the undercarriage.

Dozer blade

A parallel blade is available with standard cylinders protector for both the front and rear of the machine.



PRODUCTIVITY FEATURES

High production levels and low fuel consumption

The increased output and fuel savings of the Komatsu engine result in increased production, plus improved production per litre of fuel.

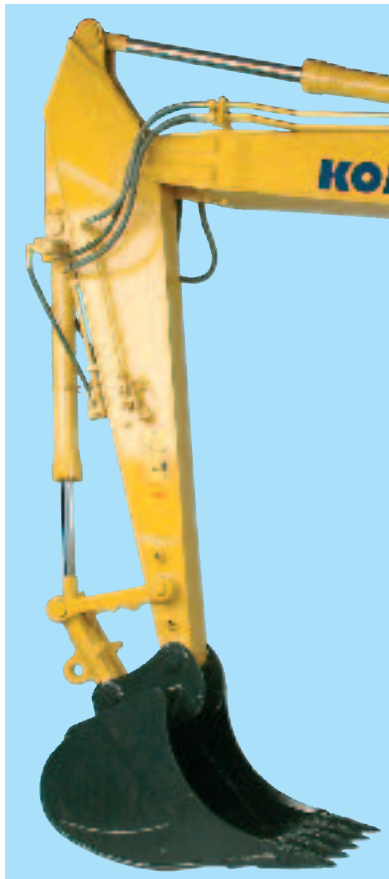
Engine

The PW220-7 gets its exceptional power and work capacity from a Komatsu SAA6D102E-2 engine. Output is 118 kW / 158 HP, providing increased hydraulic power and improved fuel efficiency.



Hydraulics

The unique two-pump system ensures smooth, simultaneous movement of the work equipment. Komatsu's exclusive HydraMind system controls both of the pumps for most-efficient use of engine power. The system also reduces hydraulic loss during operations. Optional, additional hydraulic circuits may be ordered.



Safe and precise lifting

PW220-7's stability is one of the best in his class. The machine is equipped with boom safety valves and overload caution as standard. This combined with the control of HydraMind and the power of the lifting mode, gives incredible safe and precise lifting performance.

Example: The over-side lifting capacity (reach 6 m, height 6 m) has a capacity of 6,0 tonnes. Front outriggers + rearblade and two piece boom with 2,4 m arm.



Larger arm crowd force and digging force provide increased production.

Large bore cylinders are installed to greatly increase digging forces and productivity in tough conditions.

Power Max function

Power max can be selected by depressing a joystick button for an instant burst of power to help break through tough digging situations. The power Max function is available in the A and E working mode.

Bucket digging force*:	17,950 kg
Arm crowd force*:	14,800 kg

* Measured with Power Max function, 1800mm arm and ISO rating

EASY OPERATION

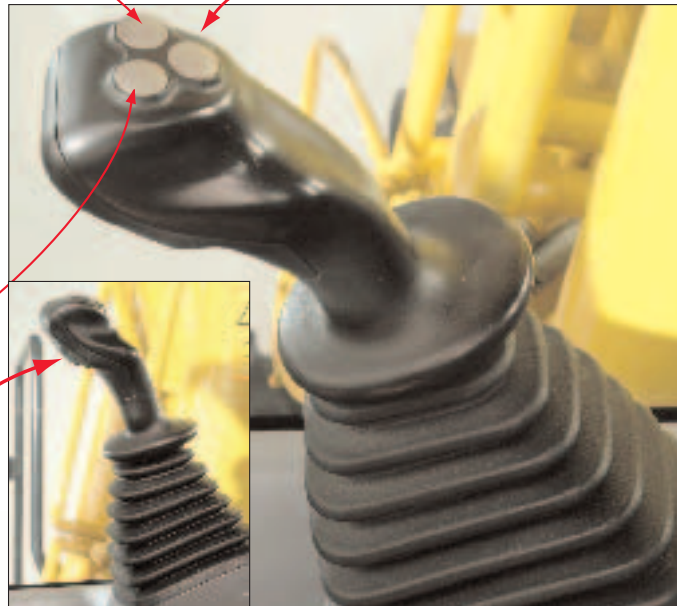
As well as operating the standard work equipment movements, the RH wrist control lever is also used to operate the undercarriage. When used in conjunction with the selection switch on the control panel, full independent control of outriggers and dozer blade is immediately available. This feature, together with the automatic axle lock, enables the machine to be moved, stabilized and operated extremely quickly.

Clamshell/ breaker control

Clockwise clamshell rotation. Also used for breaker operation when B.O. mode is selected.

Clamshell control

Anti-clock wise clamshell rotation.



Undercarriage attachment control

After a single touch, the lever can be used to precisely operate the selected undercarriage attachment. After operating the undercarriage attachments, a single touch reverts the lever into standard boom operation.

Travel control

A rock button is installed on the right hand lever, it controls the travel operation into forward, neutral and rear.

From the consistent weighting of the steering to the predictable and precise operation of the travel and brake pedals, the operator will always feel in complete control during traveling.



Travel pedal

VHMS

VHMS (Vehicle Health Monitoring System)

VHMS's precise health-check system indicates all of the machine's running conditions. At the beginning of, and during, each work shift, abnormality information and machine functions can be checked from the operator's seat.

New features: VHMS Machine health monitoring

- Failures are indicated with a 6-digit failure code
- Up to four different mechanical system measurements can be monitored at the same time
- A "Maintenance Indicator" function has been added. (Filter and oil replacement time display function)
- Mechanical system failures are now monitored, in addition to electrical system failures.

Displays running conditions and abnormality indications

At the operator's fingertips: the VHMS controller monitors engine oil level, cooling water level, fuel level, engine water temperature, engine oil pressure, battery charging level, air filter clogging, and more. The monitor also indicates whenever abnormalities are detected.

Maintenance alert assistance

The VHMS monitor alerts when oil and filters need to be replaced.

Operation data memory

The system memorises machine operating data such as engine output, hydraulic pressure, and more.

Trouble data memory

The monitor stores and recalls electrical system and mechanical system failures and abnormalities for effective troubleshooting. Twenty most-recent electrical system failures are stored.

Mechanical system failures cannot be erased, ensuring accurate documentation of vital service management information.

VHMS 'real time monitoring system'

The 'real time monitoring system' displays up to four different operating parameters simultaneously, giving the mechanic a total overview for faster troubleshooting. Parameters include operating conditions such as hydraulic oil pressure, engine RPMs, different voltages current, and even temperature measurement.

Backlight switched off



Real Time Monitoring

Reducing maintenance costs

Extended replacement intervals for engine oil and filters

New, high-performance filters are used in the hydraulic circuit and engine. Replacement intervals for the hydraulic oil filter are significantly extended, reducing maintenance costs.



Replacement intervals table: unit: hours

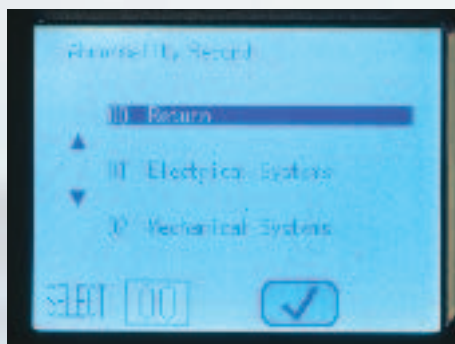
	PW220-7
Engine oil	500
Engine oil filter	500
Hydraulic oil	5.000
Hydraulic oil filter	1.000

Designed and built for strength

Using the latest computer aided design techniques and exhaustive testing, the boom and arm designs have been optimised for strength and durability. The boom top and bottom plates are manufactured from single plates, again to distribute loads evenly and avoid potential weak points.

The highly automated manufacturing process uses the very latest equipment and quality control techniques. Critical welding is carried out by robots to ensure an extremely high quality and consistent product.

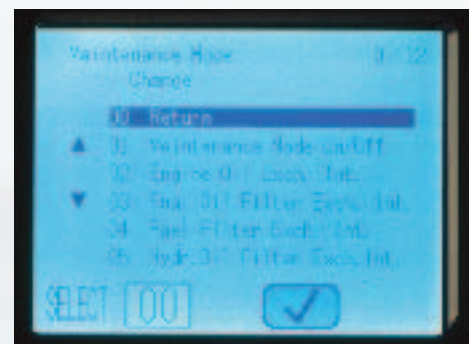
Precision engineered pin and bush system. The key work equipment joints use a chrome plated pin and bronze bushing system to provide minimal play and extended durability.



Trouble Data memory



Maintenance record



Maintenance mode change

MAINTENANCE FEATURES

Easy maintenance

Komatsu designed the PW220-7 to have easy service access. By doing this, routine maintenance and servicing are less likely to be skipped. This can mean a reduction in costly downtime later on. Here are some of the many service features found on the PW220-7.

Easy radiator cleaning

'Size by side' orientation and large fin pitch facilitate easy radiator cleaning.



Water separator

Standard equipment, which removes any water that has become mixed with the fuel, preventing fuel system damage.



Easy access to engine oil filter and fuel drain valve

Engine oil filter is easily accessible from service platform. Fuel drain valve remotely mounted to improve access.



Auto greasing (optional)

A factory-installed Central Lubricating System (CLS) ensures proper lubrication and saves driver maintenance downtime. Factory installation includes welding protective, heavy-duty line shielding onto the dipper arm during the manufacturing process, before painting. The Central Lubrication system use reinforced hoses to carry the lubricant to all of the lubrication points, and is governed by several distribution blocks. Lubrication cycles may be adjusted at operator's preference.



SPECIFICATIONS



ENGINE

Type 6 cylinder, direct injection, emissionised, turbocharged, after-cooled diesel.
 Model Komatsu SAA6D102E-2
 Power rating
 ISO 09249 (Net) 118 kW (158 HP / 160 PS) at 1950 rpm
 Bore x stroke 102 mm x 120 mm
 Piston displacement 5,88 ltr
 Air-cleaner and cooling Double element type with monitor panel dust indicator and auto dust evacuator.
 Suction type cooling fan.



ELECTRICAL SYSTEM

Alternator 24 Volt - 45 ampere
 Batteries 2 x 12 Volt - 95Ah
 Starter motor 24 Volt - 5,5 kW



HYDRAULIC SYSTEM

Type HydrauMind. Closed-centre system with load sensing and pressure compensation valves.
 Additional circuits Depending on specification up to 2 additional circuits can be installed.
 Main pump 2 variable displacement piston pumps supplying boom, arm, bucket, swing and travel circuits.
 Maximum pump flow 2 x 218,4 ltr/min
 Maximum pressures
 Implement 380 kg/cm²
 Travel 380 kg/cm²
 Swing 295 kg/cm²
 Pilot circuit 36,7 kg/cm²



STEERING SYSTEM

Steering control Hydraulic steering system supplied from a separate gear pump and controlled through LS orbitrol & priority valves.
 Minimum turning radius for 2,75m wide axles 7.050 mm (to center of outer wheel)



TRANSMISSION

Type Fully automatic power shift transmission with permanent 4 wheel drive
 Travel motors one variable displacement axial piston motor
 Maximum pressure 380 kg/cm²
 Travel modes 3 travel modes:
 Hi 35 km/h
 Lo 9,5 km/h
 Creep 2,0 km/h
 A max. speed restriction of 20 km/h is available as an option.
 Max. tractive effort 12.000 kg
 Front axle load lower than 12.000 kg
 Rear axle load lower than 12.000kg
 Axle oscillation 11° Lockable in any position from the operator cab.



BRAKE SYSTEM

Type Dual circuit hydraulic braking system supplied from a separate gear pump.
 Service brakes Pedal actuated wet multi-disc brakes integrated into the axle hubs.
 Parking brake Electrically actuated wet multi-disc "spring Actuation hydraulic release" brake integrated into the transmission.



SWING SYSTEM

Type Axial piston motor driving through planetary double reduction gearbox.
 Swing lock Electrically actuated wet multi-disc brake integrated into swing motor. An additional mechanical pin can be engaged from inside the operator cab.
 Swing speed 0 to 12,4 rpm



ENVIRONMENT

Engine emissions Fully complies with stage 2 exhaust emission regulations.
 Noise levels LWA External noise 104 dB (A) (2000/14/EC)
 LPA Operator ear noise 74 dB (A) (ISO 6396 dynamic noise)



SERVICE / REFILL CAPACITY

Fuel tank 370,0 ltr
 Radiator 23,0 ltr
 Engine 26,3 ltr
 Swing drive 6,6 ltr
 Hydraulic tank 166,0 ltr
 Transmission 2,9 ltr
 Front differential 11,5 liter for 2,5m width
 13,5 liter for 2,75m width
 Rear differential 10 liter for 2,5m width
 14 liter for 2,75m width
 Front axle hub 2,85 ltr
 Rear axle hub 2,0 ltr
 Swing pinion grease amount 33,0 ltr



OPERATION WEIGHT (APPROXIMATE)

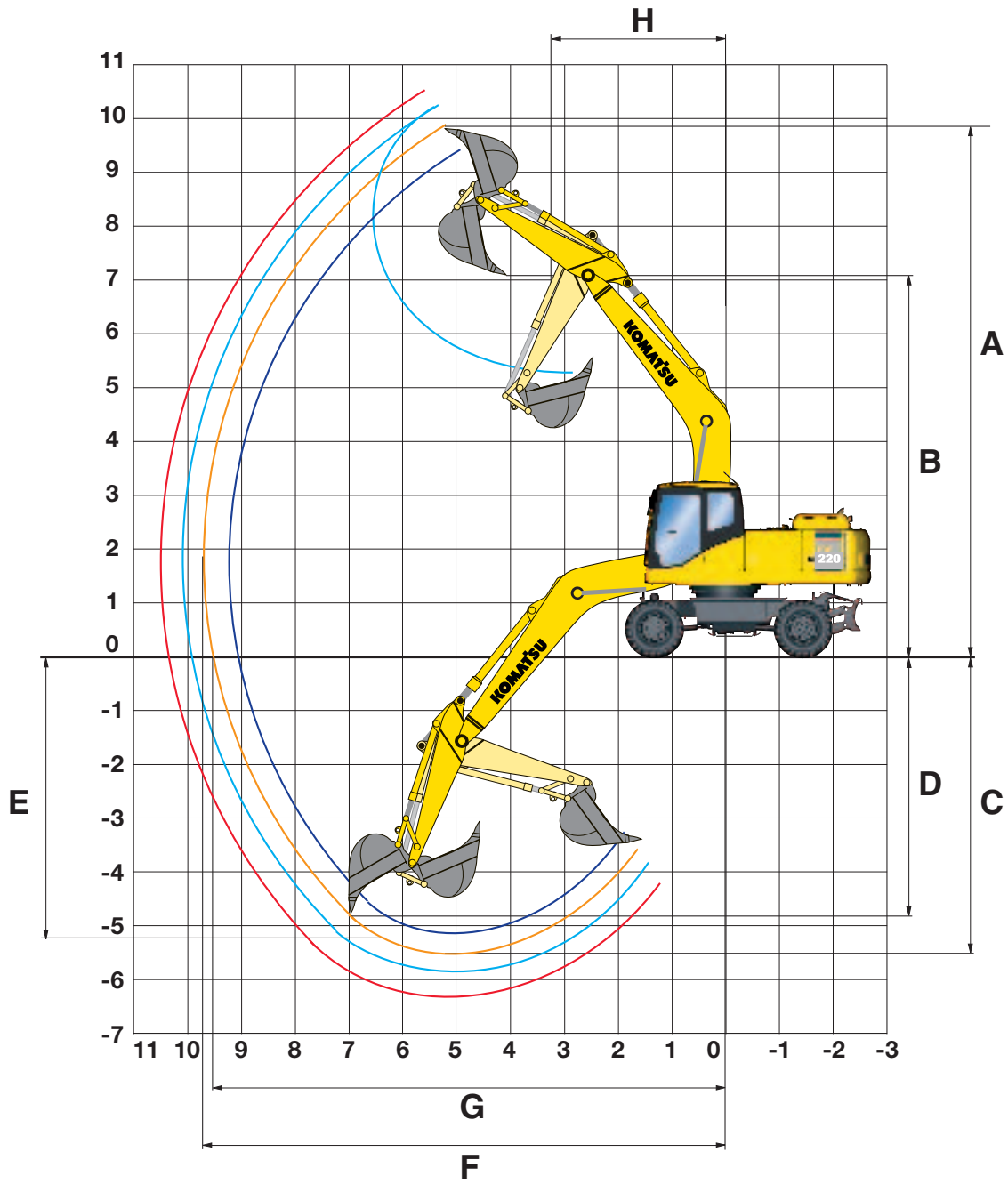
Operating weight, including 5.7 m one-piece boom, or 5,4 two piece boom, 2,4 m arm, operator, lubricant, coolant, full fuel tank and the standard equipment. Weights are with 1,0 m³ bucket.

Undercarriage type	Operating weight Mono boom		Operating weight two piece boom	
	Standard	*HD (CWT)	Standard	*HD (CWT)
Rear blade	20.400 Kg	21.150 Kg	21.060 Kg	21.820 Kg
Rear outrigger	20.570 Kg	21.330 Kg	21.230 Kg	22.000 Kg
Four outriggers	21.650 Kg	22.410 Kg	22.320 Kg	23.100 Kg
Front outrigger + blade	21.480 Kg	22.240 Kg	22.150 Kg	22.900 Kg

* Heavy duty counterweight

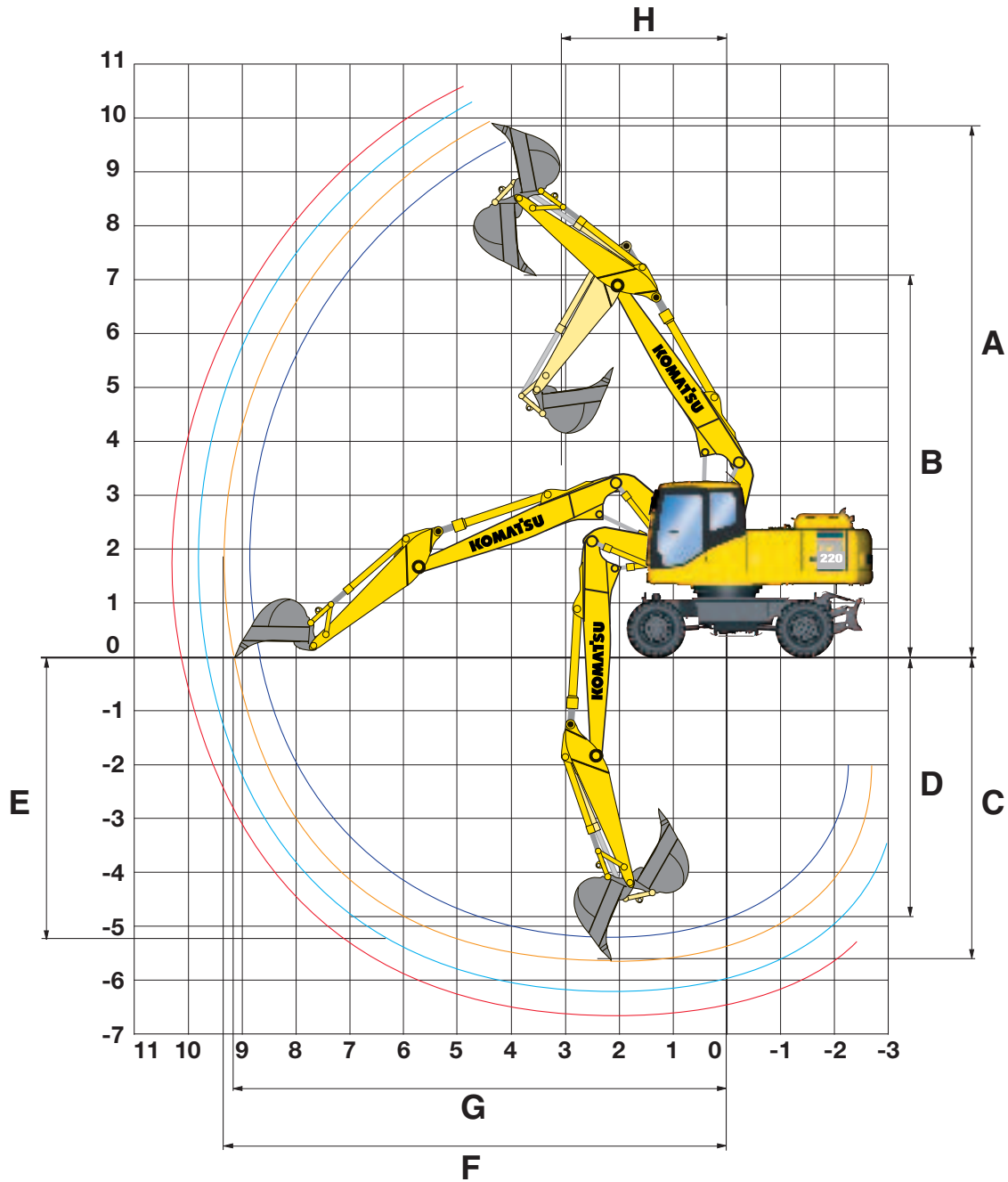
WORKING RANGES

MONO BOOM



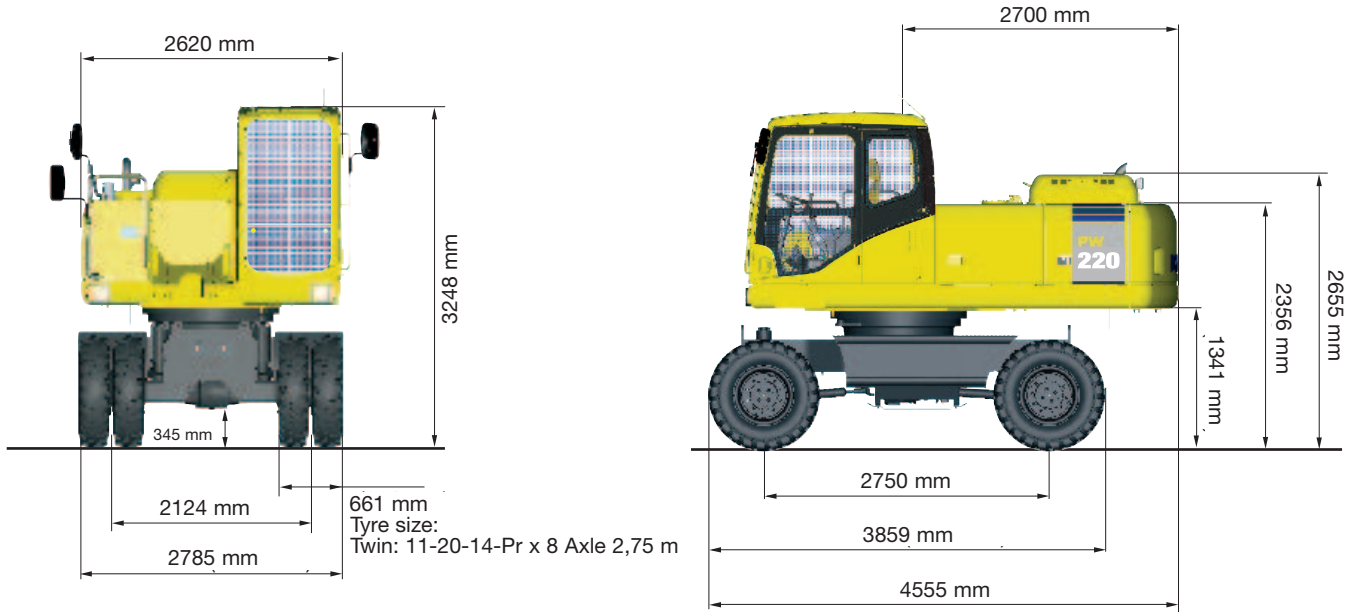
Arm length	1,8 m	2,4 m	2,9 m	3,5 m
A Max. digging height	9.467 mm	9.883 mm	10.003 mm	10.438 mm
B Max. dumping height	6.704 mm	7.057 mm	7.229 mm	7.612 mm
C Max. digging depth	4.791 mm	5.402 mm	5.917 mm	6.500 mm
D Max. vertical wall digging depth	4.140 mm	4.745 mm	5.227 mm	5.809 mm
E Max. digging depth of cut for 2,44 m level	4.515 mm	5.225 mm	5.763 mm	6.366 mm
F Max. digging reach	9.061 mm	9.651 mm	10.060 mm	10.642 mm
G Max. digging reach at ground level	8.867 mm	9.438 mm	9.875 mm	10.478 mm
H Min. swing radius	3.906 mm	3.201 mm	3.143 mm	3.148 mm

TWO PIECE BOOM

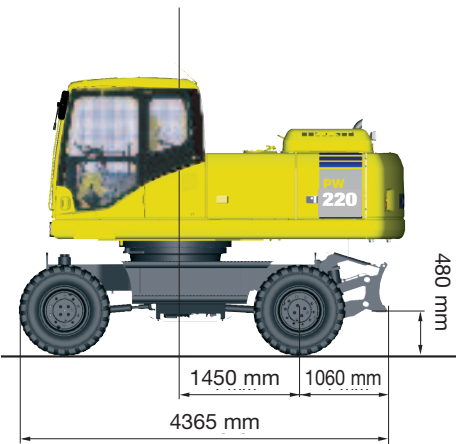


Arm length	1,8 m	2,4 m	2,9 m	3,5 m
A Max. digging height	9.532 mm	9.842 mm	10.168 mm	10.434 mm
B Max. dumping height	6.670 mm	6.982 mm	7.298 mm	7.574 mm
C Max. digging depth	5.186 mm	5.785 mm	6.285 mm	6.860 mm
D Max. vertical wall digging depth	4.104 mm	4.666 mm	5.208 mm	5.768 mm
E Max. digging depth of cut for 2,44 m level	5.119 mm	5.713 mm	6.226 mm	6.793 mm
F Max. digging reach	8.818 mm	9.348 mm	9.822 mm	10.338 mm
G Max. digging reach at ground level	8.599 mm	9.144 mm	9.634 mm	10.156 mm
H Min. swing radius	2.594 mm	3.121 mm	2.745 mm	2.866 mm

DIMENSIONS & UNDERCARRIAGE



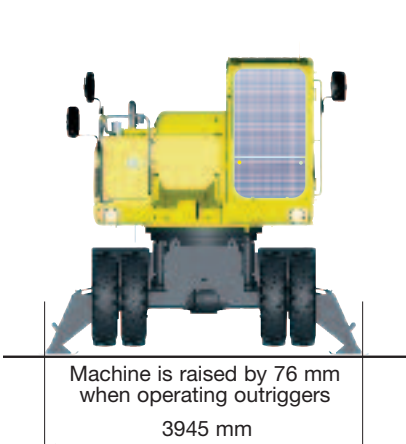
Rear blade



Front blade / Rear outrigger



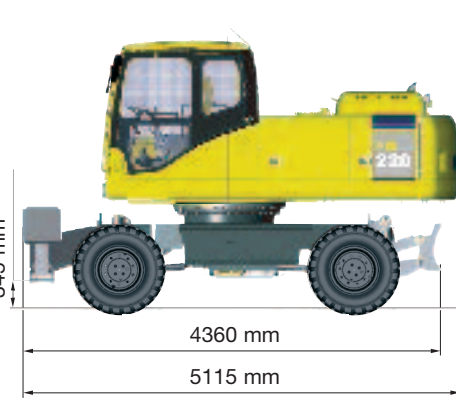
Undercarriage with outriggers out



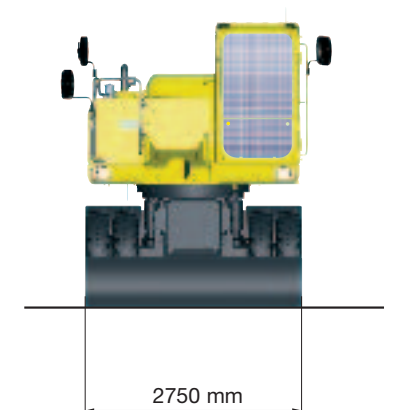
Four outriggers



Front outrigger / Rear blade

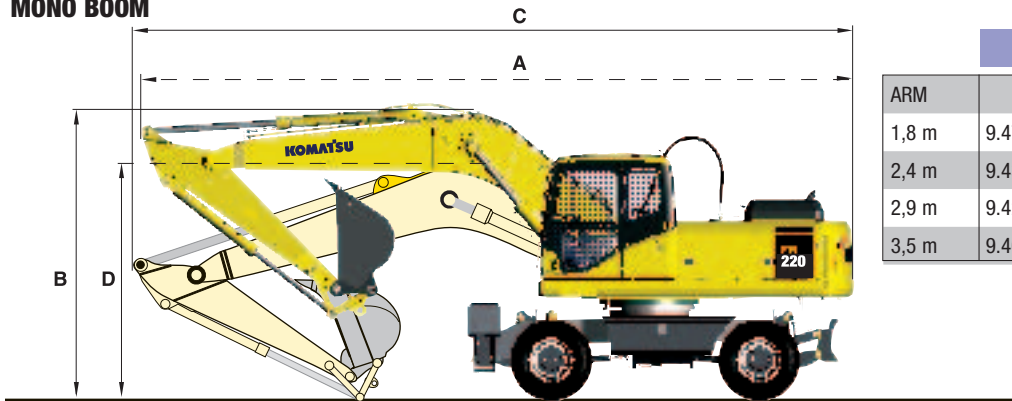


Undercarriage with blade



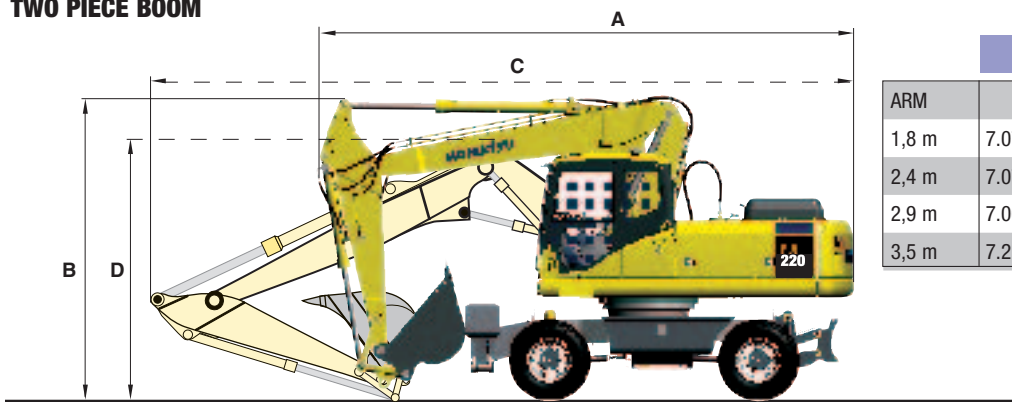
TRANSPORTATION DIMENSIONS

MONO BOOM



ARM	DRIVING POSITION		TRANSPORT POSITION	
	A	B	C	D
1,8 m	9.479 mm	3.920 mm	9.688 mm	3.272 mm
2,4 m	9.435 mm	3.909 mm	9.659 mm	3.200 mm
2,9 m	9.427 mm	3.926 mm	9.592 mm	3.019 mm
3,5 m	9.467 mm	3.999 mm	9.645 mm	3.573 mm

TWO PIECE BOOM



ARM	DRIVING POSITION		TRANSPORT POSITION	
	A	B	C	D
1,8 m	7.070 mm	3.995 mm	9.466 mm	3.054 mm
2,4 m	7.078 mm	3.995 mm	9.370 mm	3.198 mm
2,9 m	7.000 mm	4.011 mm	9.289 mm	3.100 mm
3,5 m	7.218 mm	4.519 mm	9.225 mm	3.716 mm

BUCKET AND ARM COMBINATION

BUCKET AND ARM COMBINATION			PW220-7 - standard				PW220-7 - with HD counterweight			
Width	Capacity m ³ SAE	Weight	1,8 m	2,4 m	2,9 m	3,5 m	1,8 m	2,4m	2,9 m	3,5 m
600 mm	0,48 m ³	480 kg	○	○	○	○	○	○	○	○
700 mm	0,55 m ³	530 kg	○	○	○	○	○	○	○	○
800 mm	0,63 m ³	580 kg	○	○	○	○	○	○	○	○
900 mm	0,71 m ³	610 kg	○	○	○	○	○	○	○	○
1.000 mm	0,78 m ³	650 kg	○	○	○	○	○	○	○	○
1.100 mm	0,86 m ³	700 kg	○	○	○	○	○	○	○	○
1.200 mm	0,96 m ³	760 kg	○	○	○	□	○	○	○	○
1.300 mm	1,03 m ³	810 kg	○	○	□	△	○	○	○	□
1.400 mm	1,11 m ³	870 kg	○	□	□	△	○	○	○	□
1.500 mm	1,19 m ³	930 kg	○	□	△	-	○	○	□	△
1.600 mm	1,49 m ³	1.100 kg	△	-	-	-	□	△	△	-
1.700 mm	1,58 m ³	1.150 kg	△	-	-	-	△	△	-	-
1.800 mm	1,68 m ³	1.200 kg	-	-	-	-	△	-	-	-

The recommendations are given as a guide only, based on typical operating conditions.

A wide variety of buckets & attachments is available. Contact your local dealer for more information.

○ : material weight up to 1.8 t/m³
 □ : material weight up to 1.5 t/m³
 △ : material weight up to 1.2 t/m³
 - : do not use

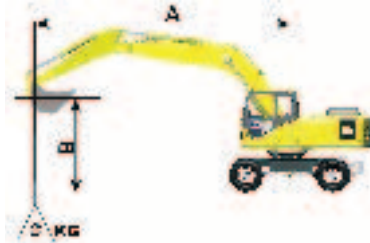
BUCKET AND ARM FORCE

Arm length	1,8 m	2,4 m	2,9 m	3,5 m
Bucket Force	16.620 kg	16.620 kg	14.170 kg	14.170 kg
Bucket Force, 'Power max'	17.950 kg	17.950 kg	15.190 kg	15.190 kg
Arm Force	13.800 kg	12.200 kg	10.300 kg	8.500 kg
Arm Force, 'Power Max'	14.800 kg	13.000 kg	11.000 kg	9.100 kg

LIFTING CAPACITY

Arm length	A	B	⊗		9,0 m		7,5 m		6,0 m		4,5 m		3,0 m		1,5 m	
			⊗	⊗	⊗	⊗	⊗	⊗	⊗	⊗	⊗	⊗	⊗	⊗	⊗	
Without stabilizer	7.5 m	kg	*4800	4300												
	6.0 m	kg	4150	2900			5200	3700								
	4.5 m	kg	3350	2300		3350	2300	5050	3550	8200	5700	*16900	10850			
	3.0 m	kg	3000	2050		3300	2250	4800	3350	7550	5100					
	1.5 m	kg	2900	1950		3200	2200	4500	3050	7000	4650					
	0.0 m	kg	3000	2000		3150	2100	4300	2850	6800	4450					
	-1.5 m	kg	3350	2250				4300	2850	6850	4500	*9300	8650			
	-3.0 m	kg	*4050	2850				4500	3050	*6300	4650					
Rear outrigger	7.5 m	kg	*4800	*4800												
	6.0 m	kg	*4450	3750				*7700	4700							
	4.5 m	kg	*4400	3050		*4450	3050	*8550	4600	*11050	7350	*16900	14600			
	3.0 m	kg	*4650	2700		6300	3000	*9050	4350	*12400	6700					
	1.5 m	kg	*5100	2600		6150	2900	9000	4050	*12550	6200					
	0.0 m	kg	5750	2700		6100	2850	*8500	3850	*11350	6000	*9300	*9300			
	-1.5 m	kg	*5250	3000				*7150	3850	*9300	6050					
	-3.0 m	kg	*4050	3800				*4600	4050	*6300	3200					
Front outrigger + rear blade	7.5 m	kg	*4850	*4850												
	6.0 m	kg	*4500	*4500				*7850	5950							
	4.5 m	kg	*4500	3900		*4500	3900	8600	5800	*11200	9400	*17150	*17150			
	3.0 m	kg	*4700	3500		5700	3850	8350	5550	*12600	8700					
	1.5 m	kg	5050	3400		5600	3750	8000	5250	*12750	8150					
	0.0 m	kg	5250	3500		5550	3700	7750	5050	*11550	7950					
	-1.5 m	kg	*5350	3900				*7250	5000	*9450	8000	*9500	*9500			
	-3.0 m	kg	*4150	*4150				*4700	*4700	*6450	*6450					
Outrigger front + rear	7.5 m	kg	*4850	*4850												
	6.0 m	kg	*4500	*4500				*7850	7100							
	4.5 m	kg	*4500	*4500		*4500	*4500	*8700	6950	*11200	*11200	*17150	*17150			
	3.0 m	kg	*4700	4250		6350	4650	*9200	6700	*12600	10750					
	1.5 m	kg	*5150	4100		6250	4550	9000	6400	*12750	10150					
	0.0 m	kg	5850	4250		6200	4450	*8650	6150	*11550	9950					
	-1.5 m	kg	*5350	4750				*7250	6150	*9450	*9450	*9500	*9500			
	-3.0 m	kg	*4150	*4150				*4700	*4700	*6450	*6450					

Arm length 1.800 mm



When removing bucket, linkage or cylinder, lifting capacities can be increased by their respective weights

- A – Reach from swing center
- B – Bucket hook height
- C – Lifting capacities, including bucket 760 kg, bucket linkage (240 kg) and bucket cylinder (160 kg)
- ⊗ – Rating over front
- ⊗ – Rating over side
- ⊗ – Rating at maximum reach

Without stabilizer	7.5 m	kg	*5050	4900					*7000	6250						
	6.0 m	kg	*4550	3200				5250	3700	*7100	6300					
	4.5 m	kg	3650	2500				5150	3600	*8450	5900	*12000	11450			
	3.0 m	kg	3200	2150		3350	2250	4900	3400	7600	5100					
	1.5 m	kg	3050	2050		3250	2150	4650	3150	7200	4750					
	0.0 m	kg	3150	2100		3150	2100	4400	2950	6900	4500					
	-1.5 m	kg	3550	2350				4400	2900	6900	4450	*12050	8500			
	-3.0 m	kg								7050	4600					
Rear outrigger	7.5 m	kg	*5050	*5050						*7000	*7000					
	6.0 m	kg	*4550	4100				*6600	4750	*7100	*7100					
	4.5 m	kg	*4450	3300				*7050	4650	*8450	7600	*12000	*12000			
	3.0 m	kg	*4600	2900		*6150	3000	*7850	4400	*10300	6750					
	1.5 m	kg	*5050	2750		6300	2900	*8600	4150	*12000	6350					
	0.0 m	kg	*5800	2850		*6000	2850	*8900	3950	*12350	6100					
	-1.5 m	kg	*6950	3200				*8550	3950	*11700	6050	*12050	12050			
	-3.0 m	kg								*9850	6250					
Front outrigger + rear blade	7.5 m	kg	*5100	*5100						*7100	*7100					
	6.0 m	kg	*4600	*4600				*6700	6100	*7250	*7250					
	4.5 m	kg	*4500	4250				*7150	6000	*8600	*8600	*12150	*12150			
	3.0 m	kg	*4700	3800		*6250	3900	*8000	5700	*10450	8900					
	1.5 m	kg	*5100	3650		6200	3800	*8750	5450	*12200	8450					
	0.0 m	kg	*5900	3750		6100	3750	*8750	5200	*12550	8200					
	-1.5 m	kg	6900	4200				*8700	5200	*11900	8150	*12250	*12250			
	-3.0 m	kg								*10050	8350					
Outrigger front + rear	7.5 m	kg	*5100	*5100						*7100	*7100					
	6.0 m	kg	*4600	*4600				*6700	*6700	*7250	*7250					
	4.5 m	kg	*4500	*4500				*7150	7150	*8600	*8600	*12150	*12150			
	3.0 m	kg	*4700	4500		*6250	4700	*8000	6850	*10450	*10450					
	1.5 m	kg	*5100	4350		6350	4600	*8750	6550	*12200	10400					
	0.0 m	kg	*5900	4500		*6100	4500	9000	6350	*12550	10100					
	-1.5 m	kg	*7050	5050				*8700	6300	*11900	10100	*12250	*12250			
	-3.0 m	kg								*10050	*10050					

Arm length 1.800 mm







When removing bucket, linkage or cylinder, lifting capacities can be increased by their respective weights

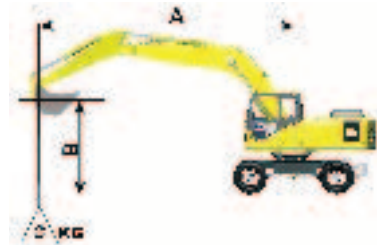
- A – Reach from swing center
- B – Bucket hook height
- C – Lifting capacities, including bucket 760 kg, bucket linkage (240 kg) and bucket cylinder (160 kg)
- ⊗ – Rating over front
- ⊗ – Rating over side
- ⊗ – Rating at maximum reach

Lifting capacity with HD counterweight
 * Load is limited by hydraulic capacity rather than tipping.
 Ratings are based on SAE Standard No. J1097.
 Rated loads do not exceed 87% of hydraulic lift capacity or 75% of tipping load.

LIFTING CAPACITY



Arm length	A	B	⊗		9,0 m		7,5 m		6,0 m		4,5 m		3,0 m		1,5 m		
			⊗	⊗	⊗	⊗	⊗	⊗	⊗	⊗	⊗	⊗	⊗	⊗	⊗		
ONE-PIECE BOOM 	Without stabilizer	7.5 m	kg	*4250	3500				*5050	3750							
		6.0 m	kg	3600	2500				5300	3800							
		4.5 m	kg	3000	2050		3450	2400	5150	3650	8450	5900					
		3.0 m	kg	2700	1800		3350	2300	4900	3400	7700	5250					
		1.5 m	kg	2600	1750		3250	2200	4650	3150	7200	4800					
		0.0 m	kg	2650	1750		3150	2100	4350	2900	6900	4550					
		-1.5 m	kg	2950	1950		3100	2100	4250	2800	6850	4500	*9750	8550			
		-3.0 m	kg	3550	2400				4400	2950	6950	4600	*9100	8800			
	Rear outrigger	7.5 m	kg	*4250	*4250				*5050	4800							
		6.0 m	kg	*4000	3250				*6800	4850							
		4.5 m	kg	*4050	2700		*6300	3150	*8100	4700	*9950	7550					
		3.0 m	kg	*4200	2450		6350	3050	*8800	4450	*11800	6850					
		1.5 m	kg	*4600	2350		6200	2900	9150	4150	*12700	6400					
		0.0 m	kg	5150	2400		6100	2850	8800	2900	*12100	6100					
		-1.5 m	kg	*5150	2650		*5700	2800	*7800	3800	*10450	6050	*9750	*9750			
		-3.0 m	kg	*4350	3200				*5900	3950	*7800	6150	*9100	*9100			
	Front outrigger + rear blade	7.5 m	kg	*4350	*4350				*5100	*5100							
		6.0 m	kg	*4100	*4100				*6900	6050							
		4.5 m	kg	*4100	3500		5900	4000	*8250	5900	*10100	9650					
		3.0 m	kg	*4300	3150		5750	3900	8450	5650	*12000	8900					
		1.5 m	kg	4600	3050		5650	3750	8150	5350	*12900	8400					
		0.0 m	kg	4700	3150		5550	3700	7800	5100	*12300	8050					
		-1.5 m	kg	5200	3450		5500	3650	7700	5000	*10600	8000	*9900	*9900			
		-3.0 m	kg	*4450	4150				*6000	5150	*7950	*7950	*9300	*9300			
	Outrigger front + rear	7.5 m	kg	*4350	*4350				*5100	*5100							
		6.0 m	kg	*4100	*4100				*6900	*6900							
		4.5 m	kg	*4100	*4100		*6350	4800	*8250	7100	*10100	*10100					
		3.0 m	kg	*4300	3850		6400	4700	*8900	6800	*12000	10950					
		1.5 m	kg	*4700	3700		6300	4550	9150	6500	*12900	10400					
		0.0 m	kg	5250	2800		6150	4450	8800	6200	*12300	10050					
		-1.5 m	kg	*5250	4200		*5800	4450	*7900	6100	*10600	10000	*9900	*9900			
		-3.0 m	kg	*4450	*4450				*6000	*6000	*7950	*7950	*9300	*9300			

Arm length 2.400 mm



When removing bucket, linkage or cylinder, lifting capacities can be increased by their respective weights

- A – Reach from swing center
- B – Bucket hook height
- C – Lifting capacities, including bucket 760 kg, bucket linkage (240 kg) and bucket cylinder (160 kg)
- ⊗ – Rating over front
- ⊗ – Rating over side
- ⊗ – Rating at maximum reach

TWO-PIECE BOOM 	Without stabilizer	7.5 m	kg	*4400	3900												
		6.0 m	kg	3900	2700				5450	3850							
		4.5 m	kg	3200	2200		3500	2400	5300	3750	*7500	6100					
		3.0 m	kg	2850	1900		3400	2300	5000	3500	8100	5500					
		1.5 m	kg	2750	1800		3300	2200	4750	3200	7400	4950					
		0.0 m	kg	2800	1850		3150	2100	4500	3000	7000	4600					
		-1.5 m	kg	3000	1950		3150	2050	4400	2900	6900	4500	*9150	8450			
		-3.0 m	kg	3850	2550				4450	2950	6950	4550	14550	87000			
	Rear outrigger	7.5 m	kg	*4400	*4400												
		6.0 m	kg	*4100	3550				*5850	4900							
		4.5 m	kg	*4050	2900		*5550	3150	*6450	4800	*7500	*7500					
		3.0 m	kg	*4200	2600		*6250	3050	*7350	4550	*9550	7200					
		1.5 m	kg	*4550	2450		6300	2950	*8300	4250	*11450	6550					
		0.0 m	kg	*5200	2500		6200	2850	*8850	4000	*12350	6200					
		-1.5 m	kg	6100	2800		6150	2800	*8800	3900	*12150	6050	*10950	*10950			
		-3.0 m	kg	*6600	3450				*7800	3950	*10850	6150	*15400	12250			
	Front outrigger + rear blade	7.5 m	kg	*4500	*4500												
		6.0 m	kg	*4150	*4150				*5950	*5950							
		4.5 m	kg	*4100	3750		*5600	4100	*6550	6100	*7600	*7600					
		3.0 m	kg	*4250	3400		6350	4000	*7500	5850	*9750	9400					
		1.5 m	kg	*4600	3250		6200	3850	*8400	5550	*11650	8700					
		0.0 m	kg	*5250	3350		6100	3750	8850	5300	*12550	8300					
		-1.5 m	kg	6000	3700		6050	3700	8700	5150	*12350	8150	*11150	*11150			
		-3.0 m	kg	*6700	4500				*7950	5250	*11050	8250	*15650	*15650			
	Outrigger front + rear	7.5 m	kg	*4500	*4500												
		6.0 m	kg	*4150	*4150				*5950	*5950							
		4.5 m	kg	*4100	*4100		*5600	4850	*6550	*6550	*7600	*7600					
		3.0 m	kg	*4250	4050		*6350	4750	*7500	6950	*9750	*9750					
		1.5 m	kg	*4600	3900		6400	4650	*8400	6650	*11650	10650					
		0.0 m	kg	*5250	4000		6250	4500	*9000	6400	*12550	10250					
		-1.5 m	kg	6150	4450		6250	4500	8950	6300	*12350	10100	*11150	*11150			
		-3.0 m	kg	*6700	5450				*7950	6350	*11000	10200	*15650	*15650			

Arm length 2.400 mm







When removing bucket, linkage or cylinder, lifting capacities can be increased by their respective weights

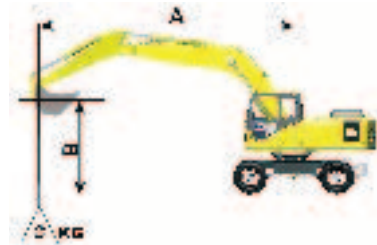
- A – Reach from swing center
- B – Bucket hook height
- C – Lifting capacities, including bucket 760 kg, bucket linkage (240 kg) and bucket cylinder (160 kg)
- ⊗ – Rating over front
- ⊗ – Rating over side
- ⊗ – Rating at maximum reach

Lifting capacity with HD counterweight
 * Load is limited by hydraulic capacity rather than tipping.
 Ratings are based on SAE Standard No. J1097.
 Rated loads do not exceed 87% of hydraulic lift capacity or 75% of tipping load.




LIFTING CAPACITY





Arm length	A	B	⊗		9,0 m		7,5 m		6,0 m		4,5 m		3,0 m		1,5 m		
			Rating over front	Rating over side	Rating over front	Rating over side	Rating over front	Rating over side	Rating over front	Rating over side	Rating over front	Rating over side	Rating over front	Rating over side	Rating over front	Rating over side	
 Without stabilizer	7.5 m	kg	*2650	*2650					*4450	3850							
	6.0 m	kg	*2550	2200			3550	2450	*5300	3850							
	4.5 m	kg	*2550	1800			3500	2450	5200	3700							
	3.0 m	kg	2450	1600			3350	2300	4950	3450	8000	5500	16400	10300			
	1.5 m	kg	2350	1550			3250	2200	4650	3200	7350	4900					
	0.0 m	kg	2400	1550			3100	2100	4400	2950	6950	4550	*5950	*5950			
	-1.5 m	kg	2600	1700			3050	2000	4200	2750	6800	4450	*9200	8450			
	-3.0 m	kg	3050	2050			3100	2050	4250	2800	6850	4450	*11250	8650			
 Rear outrigger	7.5 m	kg	*2650	*2650					*4450	*4450							
	6.0 m	kg	*2550	*2550					*3850	3200	*5300	4900					
	4.5 m	kg	*2550	2400					*5300	3150	*6600	4750					
	3.0 m	kg	*2650	2200					6350	3050	*8450	4500	*11300	7150	*18150	13950	
	1.5 m	kg	*2900	2100					6200	2900	9000	4200	*12500	6500			
	0.0 m	kg	*3300	2150					6050	2800	8850	3950	*12400	6150	*5950	*5950	
	-1.5 m	kg	*4000	2350					6000	2750	8150	3750	*11150	6000	*9200	*9200	
	-3.0 m	kg	*4350	2750					*4400	2800	*6600	3800	*8850	6050	*11250	*11250	
 Front outrigger + rear blade	7.5 m	kg	*2700	*2700					*4500	*4500							
	6.0 m	kg	*2600	*2600					*3900	*3900	*5400	*5400					
	4.5 m	kg	*2600	*2600					*5400	4050	*6700	5950					
	3.0 m	kg	*2700	*2700					5800	3900	8500	5700	*11450	9150	*18400	*18400	
	1.5 m	kg	*2950	2750					5650	3750	8200	5400	*12700	8500			
	0.0 m	kg	*3350	2800					5500	3650	7850	5100	*12600	8100	*6050	*6050	
	-1.5 m	kg	*4050	3050					5450	3600	7650	4950	*11300	7950	*9300	*9300	
	-3.0 m	kg	*4450	3600					*4500	3600	*6700	5000	*9000	8000	*11450	*11450	
 Outrigger front + rear	7.5 m	kg	*2700	*2700					*4500	*4500							
	6.0 m	kg	*2600	*2600					*3900	*3900	*5400	*5400					
	4.5 m	kg	*2600	*2600					*5400	4400	*6700	6600					
	3.0 m	kg	*2700	*2700					5950	4300	*8500	6300	*11300	10400	*18150	*18150	
	1.5 m	kg	*2950	*2950					5800	4150	8500	6000	*12650	9700			
	0.0 m	kg	*3350	3100					5650	4050	8150	5700	*12650	9250	*6050	*6050	
	-1.5 m	kg	*4050	3350					5600	3950	7950	5500	*11500	9100	*9300	*9300	
	-3.0 m	kg	*4600	4000					*4650	4000	*6900	5550	*9300	9150	*11450	*11450	

Arm length 2.900 mm



When removing bucket, linkage or cylinder, lifting capacities can be increased by their respective weights




- A – Reach from swing center
- B – Bucket hook height
- C – Lifting capacities, including bucket 760 kg bucket linkage (240 kg) and bucket cylinder (160 kg)
-  – Rating over front
-  – Rating over side
-  – Rating at maximum reach

 Without stabilizer	7.5 m	kg	*2800	*2800					*4150	3900							
	6.0 m	kg	*2600	2350					*3200	2500	*5150	3950					
	4.5 m	kg	*2550	1900					3550	2450	5400	3800	*6300	6300			
	3.0 m	kg	2550	1700					3450	2350	5100	3550	8300	5700	*13450	10900	
	1.5 m	kg	2450	1600					3300	2200	4750	3250	7550	5050	*6350	*6350	
	0.0 m	kg	2500	1600					3150	2100	4500	3000	7050	4600	*6950	*6950	
	-1.5 m	kg	2750	1750					3100	2000	4350	2850	6850	4450	*10200	8400	
	-3.0 m	kg	3250	2150							4350	2850	6850	4450	14350	8550	
 Rear outrigger	7.5 m	kg	*2800	*2800					*4150	*4150							
	6.0 m	kg	*2600	*2600					*3200	*3200	*5150	5000					
	4.5 m	kg	*2550	*2550					*4950	3200	*5850	4850	*6300	*6300			
	3.0 m	kg	*2650	2300					*5900	3100	*6850	4600	*8700	7400	*13450	*13450	
	1.5 m	kg	*2900	2200					6350	2950	*7900	4300	*10850	6700	*6350	*6350	
	0.0 m	kg	*3250	2250					6200	2800	*8650	4050	*12100	6250	*6950	*6950	
	-1.5 m	kg	*3950	2450					6100	2750	*8800	3850	*12250	6050	*10200	*10200	
	-3.0 m	kg	*5250	2950							*8250	3900	*11400	6050	*15250	12100	
 Front outrigger + rear blade	7.5 m	kg	*2850	*2850					*4250	*4250							
	6.0 m	kg	*2650	*2650					*3250	*3250	*5250	*5250					
	4.5 m	kg	*2600	*2600					*5000	4150	*5950	*5950	*6400	*6400			
	3.0 m	kg	*2700	*2700					*6000	4000	*6950	*5900	*8850	*8850	*13700	*13700	
	1.5 m	kg	*2950	*2950					6250	3850	*8050	5600	*11000	8850	*6450	*6450	
	0.0 m	kg	*3350	3000					6100	3750	*8800	5300	*12300	8350	*7050	*7050	
	-1.5 m	kg	*4000	3250					6000	3650	8650	5150	*12450	8150	*10350	*10350	
	-3.0 m	kg	*5350	3150							*8400	5150	*11600	8150	*15450	*15450	
 Outrigger front + rear	7.5 m	kg	*2850	*2850					*4250	*4250							
	6.0 m	kg	*2650	*2650					*3250	*3250	*5250	*5250					
	4.5 m	kg	*2600	*2600					*5000	4500	*5950	*5950	*6400	*6400			
	3.0 m	kg	*2700	*2700					*6000	4400	*6950	6500	*8850	*8850	*13700	*13700	
	1.5 m	kg	*2950	*2950					5900	4250	*8050	6150	*11000	10000	*6450	*6450	
	0.0 m	kg	*3350	3250					5750	4100	8400	5850	*12300	9450	*7050	*7050	
	-1.5 m	kg	*4000	3550					5700	4000	8200	5700	*12450	9200	*10350	*10350	
	-3.0 m	kg	*5350	4250							8250	5700	*11600	9200	*15450	*15450	

Arm length 2.900 mm







When removing bucket, linkage or cylinder, lifting capacities can be increased by their respective weights

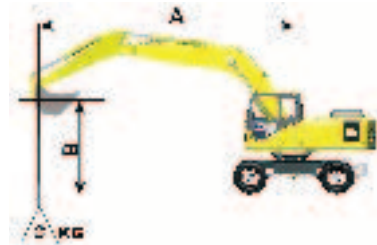
- A – Reach from swing center
- B – Bucket hook height
- C – Lifting capacities, including bucket 760 kg bucket linkage (240 kg) and bucket cylinder (160 kg)
-  – Rating over front
-  – Rating over side
-  – Rating at maximum reach

Lifting capacity with HD counterweight
 * Load is limited by hydraulic capacity rather than tipping.
 Ratings are based on SAE Standard No. J1097.
 Rated loads do not exceed 87% of hydraulic lift capacity or 75% of tipping load.

LIFTING CAPACITY





Arm length	A	B	⊗		9,0 m		7,5 m		6,0 m		4,5 m		3,0 m		1,5 m	
			⊗	⊗	⊗	⊗	⊗	⊗	⊗	⊗	⊗	⊗	⊗	⊗	⊗	
	7.5 m	kg	*2650	2450			*2700	2500								
	6.0 m	kg	*2550	1900			3600	2550								
	4.5 m	kg	2400	1600	2450	1600	3550	2450	5300	3800						
	3.0 m	kg	2150	1400	2400	1550	3400	2350	5000	3500	8200	5650				
	1.5 m	kg	2100	1350	2300	1500	3250	2200	4700	3200	7500	5050				
	0.0 m	kg	2100	1350	2250	1450	3100	2050	4450	2950	7000	4600	*6500	*6500		
	-1.5 m	kg	2250	1450			3000	1950	4150	2750	6750	4400	*8750	8300	*5200	*5200
	-3.0 m	kg	2650	1700			3000	1950	4150	2700	6700	4350	*12350	8400	*8200	*8200
	7.5 m	kg	*2650	*2650			*2700	*2700								
	6.0 m	kg	*2550	2500			*4150	3300								
	4.5 m	kg	*2550	2150	*2850	2200	*4950	3200	*5400	4800						
	3.0 m	kg	*2650	1950	*3950	2150	*6200	3050	*7750	4550	*10450	7300				
	1.5 m	kg	*2900	1850	4500	2100	6200	2900	*8750	4250	*12100	6650				
	0.0 m	kg	*3250	1900	4450	2000	6050	2800	8900	3950	*12550	6150	*6500	*6500		
	-1.5 m	kg	*3900	2050			5950	2700	*8450	3700	*11700	5950	*8750	*8750	*5200	*5200
	-3.0 m	kg	*4300	2350			*5250	2650	*7200	3700	*9850	5950	*12350	11900	*8200	*8200
	7.5 m	kg	*2700	*2700			*2750	*2750								
	6.0 m	kg	*2600	*2600			*4200	4150								
	4.5 m	kg	*2600	*2600	*2900	2850	*5050	4050	*5500	*5500						
	3.0 m	kg	*2700	2550	*4000	2800	5800	3950	*7900	5750	*10600	9400				
	1.5 m	kg	*2950	2450	4150	2750	5650	3750	8250	5450	*12300	8650				
	0.0 m	kg	*3300	2500	4050	2650	5500	3600	7950	5150	*12750	8150	*6600	*6600		
	-1.5 m	kg	*3950	2700			5400	3550	7600	4900	*11900	7900	*8900	*8900	*5300	*5300
	-3.0 m	kg	*4400	3100			*5350	3500	*7350	4850	*10000	7900	*12550	*12550	*8350	*8350
	7.5 m	kg	*2700	*2700			*2750	*2750								
	6.0 m	kg	*2600	*2600			*4200	*4200								
	4.5 m	kg	*2600	*2600	*2900	*2900	*5050	4900	*5500	*5500						
	3.0 m	kg	*2700	*2700	*4000	3400	*6300	4750	*7900	6950	*10600	*10600				
	1.5 m	kg	*2950	*2950	4600	3350	6300	4550	*8900	6600	*12300	10700				
	0.0 m	kg	*3300	3100	4500	3250	6150	4400	8950	6300	*12750	10150	*6600	*6600		
	-1.5 m	kg	*3950	3300			6050	4300	*8600	6050	*11900	9900	*8900	*8900	*5300	*5300
	-3.0 m	kg	*4400	3800			*5350	6400	*7350	6000	*10000	9850	*12550	*12550	*8350	*8350

Arm length 3.500 mm



When removing bucket, linkage or cylinder, lifting capacities can be increased by their respective weights

- A – Reach from swing center
- B – Bucket hook height
- C – Lifting capacities, including bucket 760 kg, bucket linkage (240 kg) and bucket cylinder (160 kg)
- ⊗ – Rating over front
- ⊗ – Rating over side
- ⊗ – Rating at maximum reach

	7.5 m	kg	*2700	2700												
	6.0 m	kg	*2550	2050			3650	2550	*4500	4050						
	4.5 m	kg	2550	1700			3600	2500	*5100	3900						
	3.0 m	kg	2300	1500	2400	1550	3450	2400	5200	3600	*7650	5900	*10850	*10850		
	1.5 m	kg	2200	1400	2350	1500	3300	2200	4850	3300	7650	5150				
	0.0 m	kg	2200	1400	2250	1450	3150	2050	4500	3000	7150	4700	*7600	*7600		
	-1.5 m	kg	2400	1500			3000	1950	4300	2850	6850	4400	*9700	8300	*5400	*5400
	-3.0 m	kg	2800	1800			3000	1950	4250	2750	6750	4350	*13700	8350		
	7.5 m	kg	*2750	*2750												
	6.0 m	kg	*2550	*2550			*3950	3350	*4500	*4500						
	4.5 m	kg	*2550	2300			*4750	3250	*5100	4950						
	3.0 m	kg	*2650	2050	*3350	2150	*5450	3150	*6250	4700	*7650	7600	*10850	*10850		
	1.5 m	kg	*2850	1950	*3950	2100	*6050	2950	*7400	4350	*9900	6800				
	0.0 m	kg	*3200	2000	*3650	2000	6200	2800	*8300	4050	*11650	6300	*7600	*7600		
	-1.5 m	kg	*3800	2150			6050	2700	*8750	3850	*12200	6000	*9750	*9750	*5400	*5400
	-3.0 m	kg	*4900	2500			6050	2700	*8500	3800	*11800	5950	*13700	11850		
	7.5 m	kg	*2750	*2750												
	6.0 m	kg	*2600	*2600			*4000	*4000	*4550	*4550						
	4.5 m	kg	*2600	*2600			*4850	4200	*5200	*5200						
	3.0 m	kg	*2700	*2700	*3400	2850	*5550	4050	*6350	6000	*7750	*7750	*11050	*11050		
	1.5 m	kg	*2900	2650	*4000	2800	*6150	3900	*7500	5650	*10100	8950				
	0.0 m	kg	*3250	2650	*3700	2700	6100	3700	*8450	5350	*11800	8450	*7700	*7700		
	-1.5 m	kg	*3850	2850			5950	3600	8650	5100	*12450	8100	*9850	*9850	*5500	*5500
	-3.0 m	kg	*5000	3350			5950	3600	8600	5050	*12000	8050	*13900	*13800		
	7.5 m	kg	*2750	*2750												
	6.0 m	kg	*2600	*2600			*4000	*4000	*4550	*4550						
	4.5 m	kg	*2600	*2600			*4850	*4850	*5200	*5200						
	3.0 m	kg	*2700	*2700	*3400	*3400	*5550	4850	*6350	*6350	*7750	*7750	*11050	*11050		
	1.5 m	kg	*2900	*2900	*4000	3350	*6150	4650	*7500	6750	*10100	*10100				
	0.0 m	kg	*3250	*3250	*3700	3300	6250	4500	*8450	6450	*11800	10400	*7700	*7700		
	-1.5 m	kg	*3850	3500			6150	4350	8900	6250	*12450	10050	*9850	*9850	*5500	*5500
	-3.0 m	kg	*5000	4050			6100	4350	*8650	6150	*12000	9950	*13900	*13900		

Arm length 3.500 mm



When removing bucket, linkage or cylinder, lifting capacities can be increased by their respective weights

- A – Reach from swing center
- B – Bucket hook height
- C – Lifting capacities, including bucket 760 kg, bucket linkage (240 kg) and bucket cylinder (160 kg)
- ⊗ – Rating over front
- ⊗ – Rating over side
- ⊗ – Rating at maximum reach

Lifting capacity with HD counterweight

* Load is limited by hydraulic capacity rather than tipping.

Ratings are based on SAE Standard No. J1097.

Rated loads do not exceed 87% of hydraulic lift capacity or 75% of tipping load.

WHEELED EXCAVATOR



STANDARD EQUIPMENT

Standard and optional equipment may vary. Consult your Komatsu dealer for more information.

- Komatsu SAA6D102E-2 (PEMC)
- Turbocharged, direct injection diesel engine, complies with European stage II emissions.
- Double element type air cleaner with dust indicator and auto dust evacuator, suction type cooling fan.
- Automatic fuel line de-aeration
- Engine key stop
- Engine overheat prevention system
- Engine ignition can be password secured on request
- Alternator 24V 45A
- Batteries: 2 x 12V, 95 Ah.
- Starting motor 24V 5.5Kw
- Electric closed-centre load sensing (ECLSS) hydraulic system (HydraMind)
- Pump and engine mutual control
- Four sets of tyre and rim (twin tyre) 11.00-20 16PR (2,75m undercarriage)
- Multi function monitor with equipment management monitoring system (EMMS).
- 4 Working mode selection system (active, economy, breaker and lifting mode)
- Power max function
- Auto-deceleration function
- Automatic engine warm-up system
- Adjustable PPC wrist control levers for arm, boom, bucket and swing
- One additional service valve (full flow) power shift type
- Fully automatic 3-speed transmission driving through front and rear planetary axles.
- Orbitrol type hydraulic steering acting on front wheels
- Oscillating front axle (11°) with automatic and manual cylinder locking
- Dual circuit hydraulic brakes with out-board wet multi-disc service brakes
- Spring actuated park brake (hydraulic release) incorporated into transmission
- SpaceCab, highly pressurized and tightly sealed viscous mounted cab with tinted safety glass windows, pull-up type front window with locking device, removable lower window, front window wiper with intermittent feature, sun blind roller, magazine rack behind seat, 12V power supply, cigarette lighter, ashtray; floor mat,
- machine cab handrails, suspension seat with tiltable left hand console, automatic weight adjustment, adjustable arm rests and retractable seat belt, climate control system, hot and cool box
- 2,75m width undercarriage.
- Refuelling pump
- Boom safety valves
- Twin tool boxes
- Overload warning device
- Operation and maintenance manual
- Lockable fuel cap and covers
- Toolkit and spare parts for first service

OPTIONAL EQUIPMENT

- Lower wiper
- Parallel blade (front and / or rear)
- 2 or 4 outriggers with cylinder protection
- Mono boom and two piece boom
- 1,8m, 2,4m, 2,9 and 3,5m arms
- Wide range of Komatsu buckets
- Cold weather battery 120 Ah
- Additional hydraulic circuits
- Mechanical or hydraulic quick coupler
- Heated air suspension seat
- Radio-cassette
- OPG front guard
- Additional RH boom lamp
- Rotating beacon preparation
- Rain visor (not for use with OPG)
- Engine room lamp
- Auto grease system
- Additional large capacity cab roof lights (3)
- Bio-degradable oil
- Adjust cylinder safety valve
- Arm cylinder safety valve
- Customized paint
- HD counterweight



Komatsu Europe International NV

Mechelsesteenweg 586
 B-1800 VILVOORDE (BELGIUM)
 Tel. +32-2-255 24 11
 Fax +32-2-252 19 81
 www: komatsueurope.com

Printed in Europe - This specification sheet may contain attachments and optional equipment that are not available in your area. Please consult your local Komatsu distributor for those items you may require. Materials and specifications are subject to change without notice.